

Recall - PCM Update for Warm-Up Cat. Converter Melt Down

No: EMR-05-001REVII

DATE: December, 2005

MODEL:
2002-05 Lancer

CATALYTIC CONVERTER - OVERHEATING - EMISSIONS RECALL CAMPAIGN

This TSB supercedes EMR-05-001REV, issued October 2005, to update the PCM reprogramming database, which eliminates TPS reinitialization, and to update the warranty labor time.

PURPOSE

Some affected vehicles have incorrect parameters in the Powertrain Control Module (PCM) software that may cause the warm-up catalytic converter to overheat and melt when the vehicle is repeatedly driven at wide-open throttle. For certain 2002-2003 vehicles, new warranty limits will apply to the warm-up catalytic converter, which are described in the CUSTOMER NOTIFICATION and WARRANTY INFORMATION sections of this bulletin.

^ For all affected vehicles, reprogram the PCM as described in this bulletin, regardless of the age or mileage of the vehicle.

^ If an affected vehicle has a Service Engine Soon (SES) lamp on and DTC P0421 set, also replace the warm-up catalytic converter, using an exhaust manifold repair kit. See warranty details below.

AFFECTED VEHICLES

2002-2005 Lancer models equipped with 2.0L engine (approximately 195,000 vehicles)

CUSTOMER NOTIFICATION

A letter will be sent to all owners of affected vehicles, telling them to bring their vehicle to a Mitsubishi Motors dealer to have the PCM reprogrammed at no charge, and that if their vehicle has a SES lamp on for failure of the warm-up catalytic converter (DTC P0421), they will also receive a new warm-up catalytic converter.

In addition, owners will be advised that the new warranty coverage for the warm-up catalytic converter will be extended from 8 years/80,000 miles to a limit of 8 years/100,000 miles. Until February 28, 2006, replacement of the warm-up catalytic converter will be free of charge, regardless of vehicle mileage.

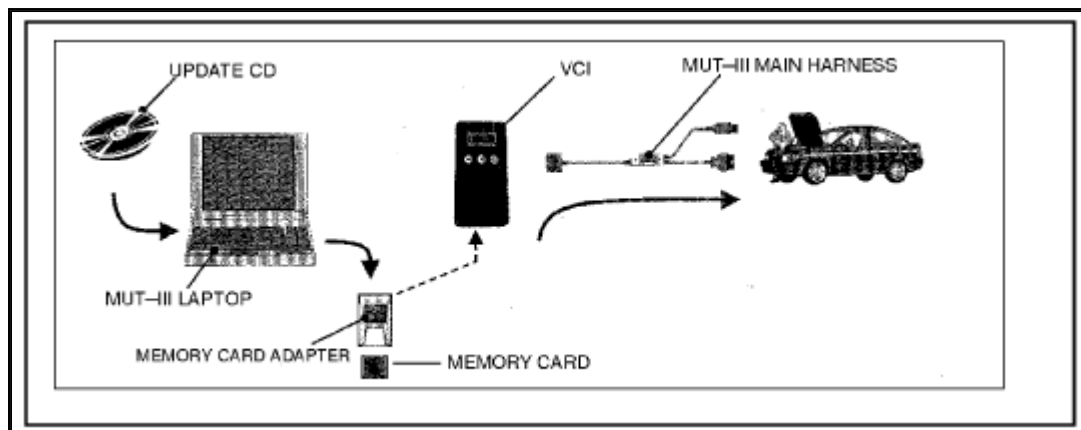
After February 28, 2006, all owners (regardless of vehicle mileage) will be entitled to the PCM reflash free of charge. However, warm-up catalytic converter replacement will not be covered under the warranty if a 2002-2003 model has over 100,000 miles (over 80,000 miles for 2004-2005 models). A copy of the customer notification letter is shown in this bulletin.

REQUIRED OPERATIONS

Before starting this campaign procedure, CHECK ON THE WARRANTY SUPERSCREEN to verify that the vehicle is an affected VIN for this campaign and that this campaign procedure has not already been completed.

CAUTION BATTERY VOLTAGE (AS MEASURED AT THE BATTERY POSTS WITHOUT ELECTRICAL LOAD) MUST BE 12.4V OR HIGHER IN ORDER TO REPROGRAM THE PCM.

1. Check the underside of the hood to verify that there is no label previously installed to indicate that this Emissions Recall reprogramming has already been done.
2. Verify that the vehicle's PCM part number is listed in the table in Step 11 of this bulletin.
 - a. Verify whether the ROM ID is the same as the ROM ID listed in the table in Step 11. If the ROM ID is the same as or higher than the ROM ID in the table, the PCM has already been reprogrammed for this concern.
3. Note any DTCs set in the PCM. Then use the MUT-III to erase all DTCs.
4. Verify that your MUT-III has the most current version of the reprogramming database:
 - a. Select "Special Function", then select "ECU Reprogramming."
 - b. Select "Database File Display". The database version is displayed in the top right corner of the screen. Make sure the database version is N05111 or greater..
 - c. If the database version is less than N05111, go to Step 5.
 - d. If the database version is N05111 or greater, go to Step 8.
5. Turn the ignition key to OFF and disconnect the MUT-III.
6. Gather the following reprogramming equipment:
 - MUT-III/STV Reflash Update CD 12/05 or later
 - Memory Card 128 MByte Compact Flash MB991853
 - Memory Card Adapter PCMCIA MB991939
 - "Engine Compartment/Control Module" Labels p/n MSSF-024G-00


[ZOOM](#)
[SIZED FOR PRINT](#)

7. Install Reflash Update CD 12/05 in the MUT-III laptop. Follow the CD installation instructions.
8. Transfer the reprogramming data from the laptop to the memory card.
9. Remove the memory card from the laptop and install it in the VCI. Connect the VCI to the vehicle. **YOU MUST DISCONNECT THE MUT-III LAPTOP.**
10. **MODELS EQUIPPED WITH ABS:** With the ignition key OFF, unplug the ABS fuse (7.5 amp fuse in junction box in passenger compartment).

11. Reprogram the PCM, using automatic reprogramming. For reprogramming details, refer to TSB-03-00-015. It will take up to 20 minutes to complete the reprogramming.

			DISPLAY ON MUT-III SCREEN AFTER REPROGRAMMING		
MODEL	PCM PART NUMBER	MUT-III REFLASH DATABASE	ECU PART NUMBER	ROM ID	VENDOR #
2002 Lancer M/T Fed. emissions	MR578519	VN0510A	MR578519	987220	E6T34976H5
2002 Lancer A/T Fed. emissions R15 tires	MR578521	VN0510B	Eng: MR578521 A/T: MR578521	Eng: 885621 A/T: 852806	E6T31083HS40
2002 Lancer A/T Fed. emissions R14 tires	MR578490	VN0510C	Eng: MR578490 A/T: MR578490	Eng: 899021 A/T: 864204	E6T31081HS40
2002 Lancer M/T Calif. emissions	MR578518	VN0510G	MR578518	986720	E6T34975H5
2002 Lancer A/T Calif. emissions R15 tires	MR578520	VN0510H	Eng: MR578520 A/T: MR578520	Eng: 885421 A/T: 852606	E6T31082HS40
2002 Lancer A/T Calif. emissions R14 tires	MR578489	VN0510I	Eng: MR578489 A/T: MR578489	Eng: 898921 A/T: 864104	E6T31080HS40
2003 Lancer M/T Fed. emissions	MR988330	VN05107	MR988330	918915	E6T34979H4
2003 Lancer A/T Fed. emissions R15 tires	MR988331	VN05108	Eng: MR988331 A/T: MR988331	Eng: 819016 A/T: 875102	E6T31087HS40
2003 Lancer A/T Fed. emissions R14 tires	MR988332	VN05109	Eng: MR988332 A/T: MR988332	Eng: 819116 A/T: 875202	E6T31088HS40
2003 Lancer M/T Calif. emissions	MR988327	VN0510D	MR988327	918616	E6T34978H4
2003 Lancer A/T Calif. emissions R15 tires	MR988328	VN0510E	Eng: MR988328 A/T: MR988328	Eng: 818717 A/T: 874902	E6T31085HS40
2003 Lancer A/T Calif. emissions R14 tires	MR988329	VN0510F	Eng: MR988329 A/T: MR988329	Eng: 818817 A/T: 875002	E6T31086HS40
2004 Lancer M/T	MN132864	VN05104	MN132864	922923	E6T34983H5
2004 Lancer A/T R15 tires	MN132867	VN05105	Eng: MN132867 A/T: MN132867	Eng: 823024 A/T: 876903	E6T31095H50
2004 Lancer A/T R14 tires	MN132868	VN05106	Eng: MN132868 A/T: MN132868	Eng: 823124 A/T: 877001	E6T31096H50
2005 Lancer M/T	1860A067	VN05101	1860A067	966314	E6T34987H3
2005 Lancer A/T R15 tires	1860A068	VN05102	Eng: 1860A068 A/T: 1860A068	Eng: 866414 A/T: 802302	E6T42773H30
2005 Lancer A/T R14 tires	1860A069	VN05103	Eng: 1860A069 A/T: 1860A069	Eng: 866514 A/T: 802402	E6T42774H30
2006 Lancer M/T	1860A417	VN05091	1860A417	882512	E6T34989H1
2006 Lancer A/T R15 tires	1860A418	VN05092	Eng: 1860A418 A/T: 1860A418	Eng: 882612 A/T: 812502	E6T42777H10
2006 Lancer A/T R14 tires	1860A419	VN05093	Eng: 1860A419 A/T: 1860A419	Eng: 882712 A/T: 812601	E6T42778H10

ZOOM

SIZED FOR PRINT


NOTE: If the message "ECU at Current Level of VCI" appears, the PCM did not reprogram. Verify that the ROM ID is the same as the ROM ID listed in the table shown.

^ If the ROM ID is the same as or higher than the ROM ID in the table, the PCM has been reprogrammed for this concern.

^ If it is not, verify that the correct database update is in the MUT-III and was transferred to the memory card, and that the memory card is properly installed in the VCI.

CAUTION DO NOT DISTURB THE HARNESS CABLES OR CONNECTIONS. INTERRUPTION DURING THE PROGRAMMING PROCESS COULD CAUSE THE PCM TO LOSE DATA OR PREVENT FUTURE PCM REPROGRAMMING.

- a. After reprogramming is completed, the new ENG ROM ID and new A/T ROM ID will display alternately with the message "Turn IC SW OFF" every four seconds. Note this information. Verify that the new PCM part number and ROM IDs are the same as those listed in the table.
- 12. If DTC P0421 was set in the PCM, replace the warm-up [catalytic converter](#), using the [exhaust manifold](#) repair kit listed in the PARTS INFORMATION section of this bulletin. Refer to Group 17 (for California emissions vehicles) or Group 15 (except California emissions vehicles) in the appropriate service manual for installation instructions.


MITSUBISHI
IMPORT SALES OF AMERICA, Inc.

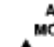
AUTHORIZED MODIFICATIONS
These Modifications Have Been Approved as Appropriate by EPA and CARB

THE FOLLOWING MODIFICATIONS HAVE BEEN MADE:

PART NUMBER	VENDOR CODE	ROM ID #
TSB		ENG
ENG		A/T
A/T		

DEALER CODE
DATE / /

Engine Compartment Label

AUTHORIZED MODIFICATIONS

MITSUBISHI
IMPORT SALES OF AMERICA, Inc.

P/N
Vndr Code
TSB
Dir Code
Date

Control Module Label

ZOOM

SIZED FOR PRINT

- 13. Using a ball-point pen, enter the appropriate PCM part number, vendor number, ROM ID #, this recall bulletin number (EMR-05-001), your dealer code, and the current date on the Engine Compartment / Control Module Label (p/n MSSF-024G-00).
- 14. Carefully remove all dirt and oil from a vacant area near the VECI label on the underside of the hood, and affix the Engine Compartment label.
- 15. Affix the Control Module label to the PCM.
- 16. MODELS EQUIPPED WITH ABS: Reinstall the ABS fuse.

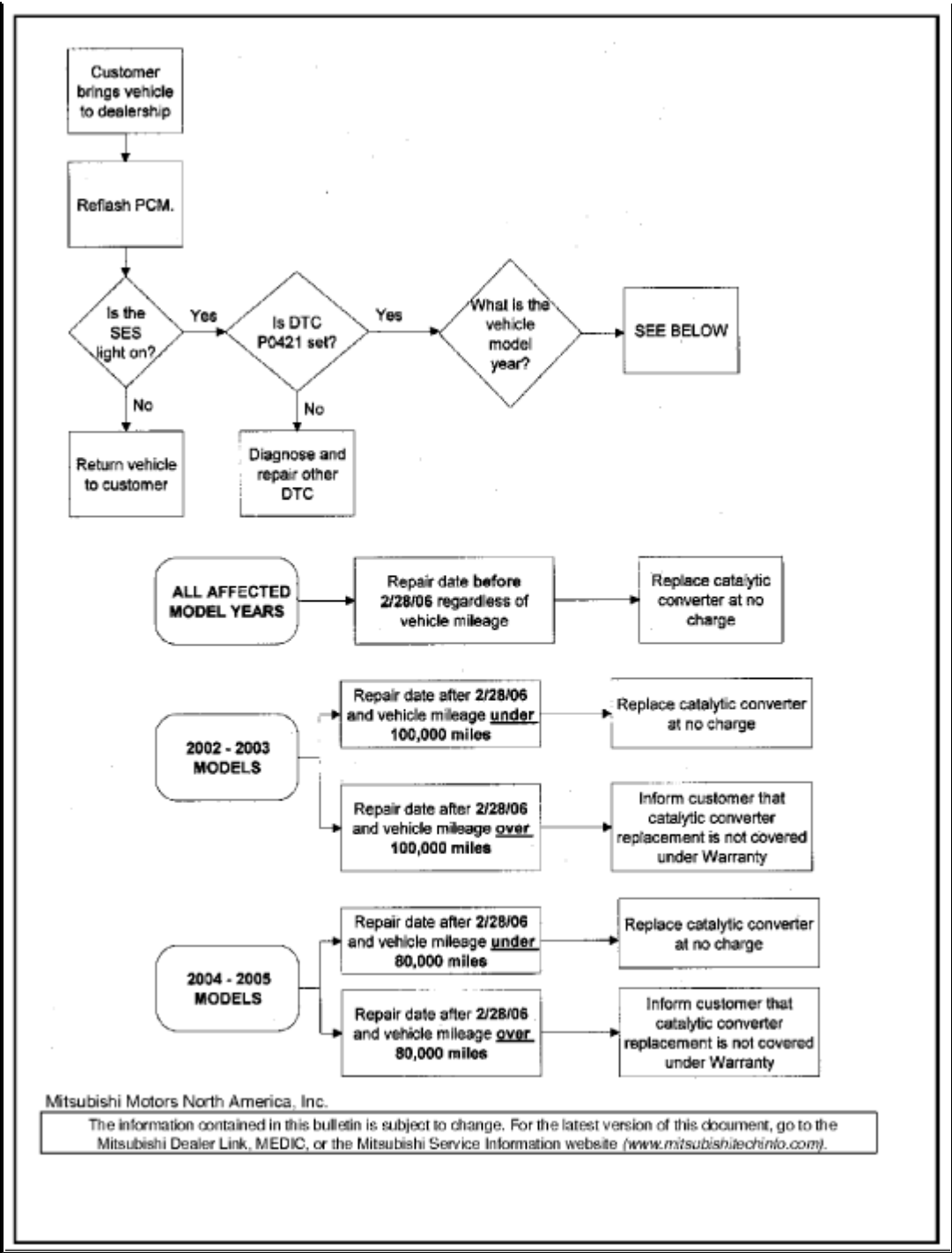
Variable Emission Recall - Proof of Correction

License Number	Make	Year/Model	Body Type	Vehicle Identification Number
Manufacturer: Mitsubishi Motors Recall Number:				
The above described vehicle has been repaired, modified or otherwise equipped with new emission control devices to meet applicable California Emission Control Laws.				
Dealer's Name		Address, City, State and Zip		
Date		Dealership's Authorized Signature		
This certificate must be returned to the DMV with your billing notice.				

14001-1000-00

ZOOM

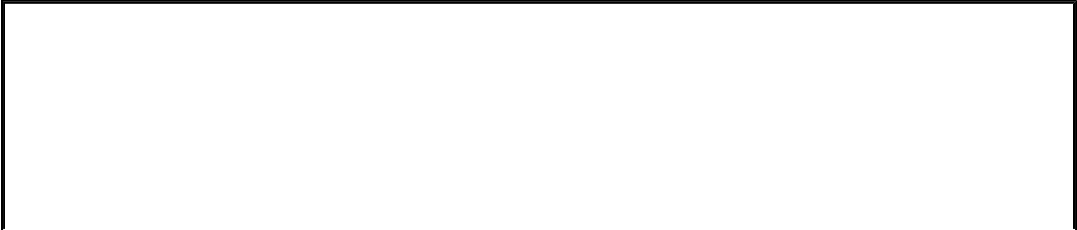
SIZED FOR PRINT



ZOOM

SIZED FOR PRINT

Refer to the flowchart shown.



2002-2005 Lancers Equipped with 2.0L Engine
Catalytic Converter Overheating – Emissions Recall Campaign

Header Section

MITSUBISHI DEALER LINK		Service Warranty		Help	
Claim Entry		Vehicle Information		PQR/VQR	
Campaign Information					
Campaign Operation No *	C0505J				
Miles/Km					
VIN	JA.....				
Repair Date In			Repair Date Out		
Service Technician	Emp No	Service Advisor		Emp No	
Spec Value *			Duplicate Recall *	<input type="checkbox"/>	
Dealer: 99320	Ref No:			VIN:	
Claim No:	Adj:	Claim Status:	Incomplete	Model and Year:	
Save & Continue			Main Menu		

ZOOM

SIZED FOR PRINT

Parts Section – If ONLY PCM Reflash is needed

MITSUBISHI DEALER LINK Service Warranty Recall Claim Help

Claim Entry Vehicle Information e-Reports DMS Interface POR/VOR

Add Page – Parts Information

No Parts are allowed if only the PCM re-flash is required

Delete	Part No	Part Description	Qty	Unit Price	Part Amount	Primary
1.						<input type="radio"/>
2.						<input type="radio"/>
3.						<input type="radio"/>
4.						<input type="radio"/>
5.						<input type="radio"/>
6.						<input type="radio"/>
7.						<input type="radio"/>

Check Part Prices Save & Continue More Parts Main Menu Cancel Changes

Labor Section – If ONLY PCM Reflash is needed

MITSUBISHI DEALER LINK Service Warranty Recall Claim Help

Claim Entry Vehicle Information e-Reports DMS Interface POR/VOR

Add Page – Labor Information

Note: These entries will automatically be filled in based on the campaign number you entered on the previous screen.

Delete	Sublet	Labor Op	Labor Operation Description	Qty	Hours / Sublet Amt	Total Hrs	Labor Amt
		C0505JXX		1	.3		

Verify C0505JXX comes up as the full campaign labor operation number

Qty of 1

Enter the allowed labor time for the PCM re-flash of .3 hours

Total Labor Amount

Update Finish PWA Main Menu Cancel Changes

ZOOM

SIZED FOR PRINT

MITSUBISHI DEALER LINK

Service Warranty Recall Claim

Claim Entry Vehicle Information e-Reports DMS Interface PQR/VQR

Add Page - Labor Information

Note: These entries will automatically be filled in based on the campaign number you entered on the previous screen.

Delete	Sublet	Labor Op	Labor Operation Description	Qty	Hours / Sublet Amt	Total Hrs	Labor Amt
		C0505JXX		1	1.9		

Verify C0505JXX comes up as the full campaign labor operation number

Qty of 1

Enter the allowed labor time of 1.9 hours for both the PCM re-flash and Catalytic Converter Replacement.

Total Labor Amount

Update Finish PWA Main Menu Cancel Changes

SIZED FOR PRINT

Replacement Parts Storage and Retention:

Retain all replaced **catalytic converters** for at least five (5) days after the payment of the related campaign claim. The five days begins the day after the claim appears in the "Paid" section of your warranty claim statement. If the part is requested during those five days, you must return the part as indicated on the parts return request letter.

If you do not receive a request after five days from the claim payment date, you may scrap the replaced **catalytic**

[converter.](#)